

## BLOCKING AGENTS

**MERIDIAN LIFE SCIENCE, INC. (MLS) IS A LEADING MANUFACTURER OF:**

HAMA/HA blockers | Critical assay reagents for the IVD and biopharmaceutical markets



### COMMERCIAL BLOCKING AGENTS

- Animal Sera
- Assay Blocking Buffers
- Goat anti-Human IgG Absorbant
- Mouse IgG – HAMA Blocker
- Other Animal IgG's (HA Blockers)
- TRU Block® - HAMA/HA Active Blocker

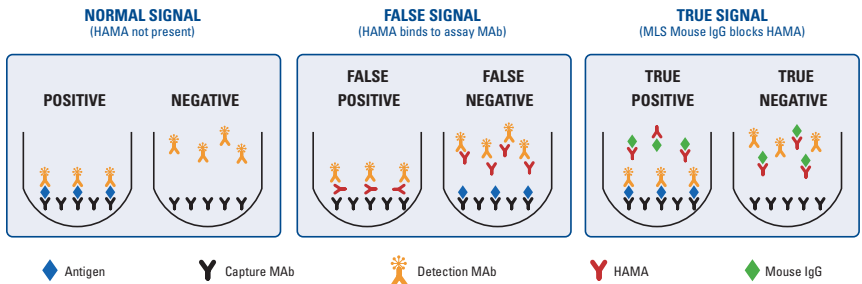
## MOUSE IgG

MLS manufactures commercial scale Mouse IgG in a variety of formulations for use as a Human Anti-Mouse Antibody (HAMA) blocker in immunoassays:

- A66186M (concentration range 9-13 mg/mL, Protein A Purified)
- A66185M (concentration range 50-55 mg/mL, Protein A Purified)
- A66187M Mouse IgG (Caprylic Acid)
- Customized product upon request



The blocking mechanism of HAMA Blocker Mouse IgG is illustrated below:



Heterophilic antibodies (HA) to other animals may also cause false results. MLS has available the following animal IgG's for HA blocking:

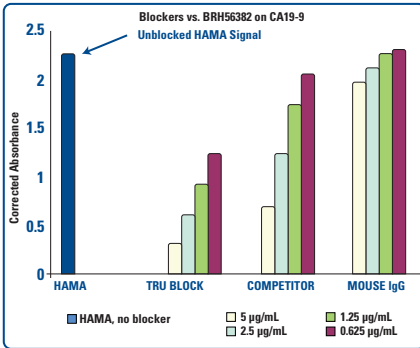
Sheep (HASA) | Goat (HAGA) | Rabbit (HARA)

# TRU BLOCK<sup>®</sup>

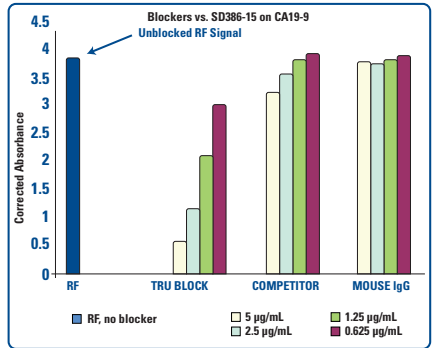
Active Blocker – uses a proprietary active mechanism to bind Human Anti-Mouse Antibodies (HAMA)  
 Blocks HAMA, other types of Heterophilic Antibodies (HA) and Rheumatoid Factor (RF)  
 High potency blocking: Use 5 – 20x less than Mouse IgG  
 Functional testing performed on each lot  
 Outperforms competitive products

Using a commercial CA19-9 Sandwich Assay, TRU Block, Mouse IgG and a competitor's active blocker were tested for effectiveness in blocking HAMA and RF.

## HAMA



## RF



## TESTING PROTOCOL

Buffer without mouse IgG or other blockers was used in place of kit buffer which contained mouse IgG as blocker

Blockers were added in sample diluent buffer

HAMA/RF activity was measured initially in the absence of blockers to determine 100% signal

HAMA/RF activity was then tested in the presence of blocker to measure suppression of signal

A lower absorbance indicates a greater suppression of HAMA/RF